



PRODUCT MODEL

NI Series LED T8

DESCRIPTION: 85-265V LED T8,

VERSION: A1

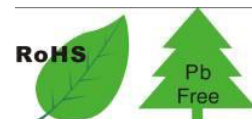
DATE: 2010-9-28

Specification for mass production

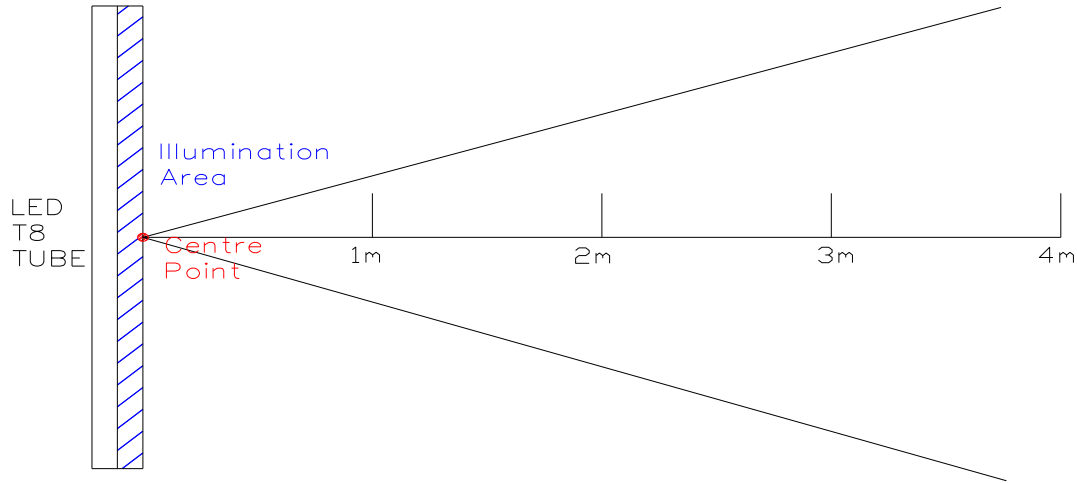
Approval

Approval

Disapproval



Illuminance Testing Data

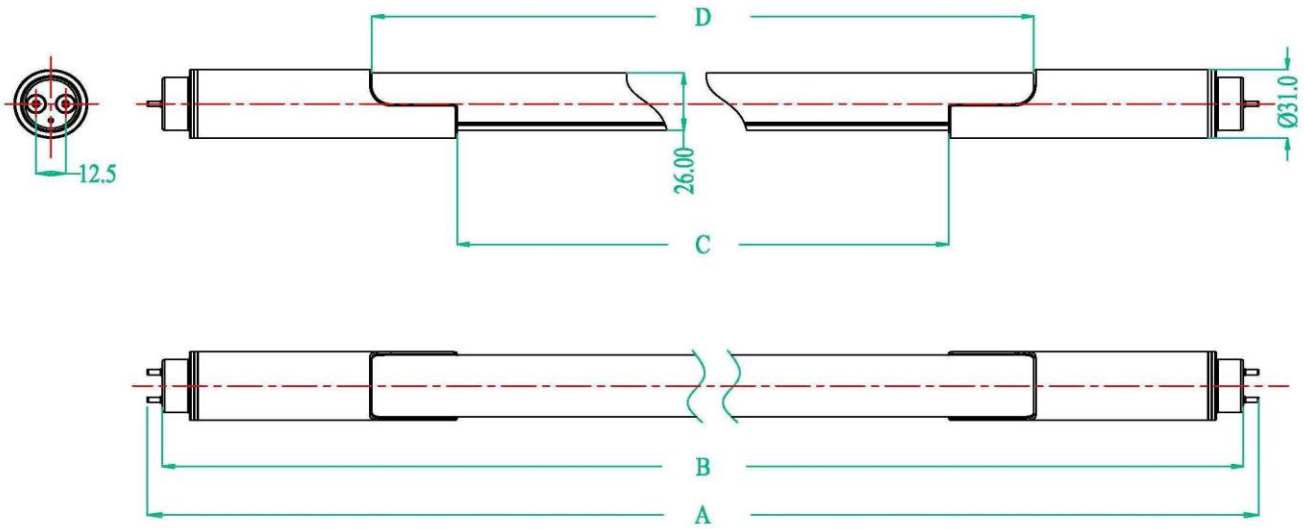


Part Number	Tc	Lux Level@1m	Lux Level@2m	Lux Level@3m	Lux Level@4m
ZL-T8-06NI(J)	2500-3500K	165	42	18	9
	4000-5000K	180	51	23	12
	6000-7000K	190	52	24	13
ZL-T8-06NI	2500-3500K	170	43	19	10
	4000-5000K	185	53	25	15
	6000-7000K	195	53	24	14
ZL-T8-09NI	2500-3500K	210	61	27	15
	4000-5000K	215	69	35	24
	6000-7000K	240	75	42	26
ZL-T8-12NI	2500-3500K	315	98	46	26
	4000-5000K	350	110	51	30
	6000-7000K	365	114	53	31
ZL-T8-15NI	2500-3500K	270	82	39	22
	4000-5000K	340	105	50	29
	6000-7000K	345	110	50	30
EL-T8-15NI	2700-3500K	325	120	57	30
	4000-5000K	404	135	63	37
	6000-7000K	420	139	66	38

Note :

The above picture is for reference only, the angle in the picture may not represent the angle of an actual item.

Physical Dimension



Part Number	A (MAX)	B (MAX)	C (MAX)	D (MAX)
ZL-T8-06NI(J)	594	580	330	410
ZL-T8-06NI	604	590	340	420
ZL-T8-09NI	908	894	644	724
ZL-T8-12NI	1213	1199	949	1029
ZL-T8-15NI EL-T8-15NI	1513	1499	1249	1329

Note

1. Tolerance : -6, +0.
2. Unit: mm.

Package

Part Number	Carton Dimension (mm)	Gross Weight (kg)	Quantity Per Carton (pcs)
ZL-T8-06NI(J)	660*395*240	15	60
ZL-T8-06NI	660*395*240	15.5	60
ZL-T8-09NI	970*395*195	19	50
ZL-T8-12NI	1270*240*195	15.5	30
ZL-T8-15NI EL-T8-15NI	1570*240*195	19	30

Circuit Diagram

