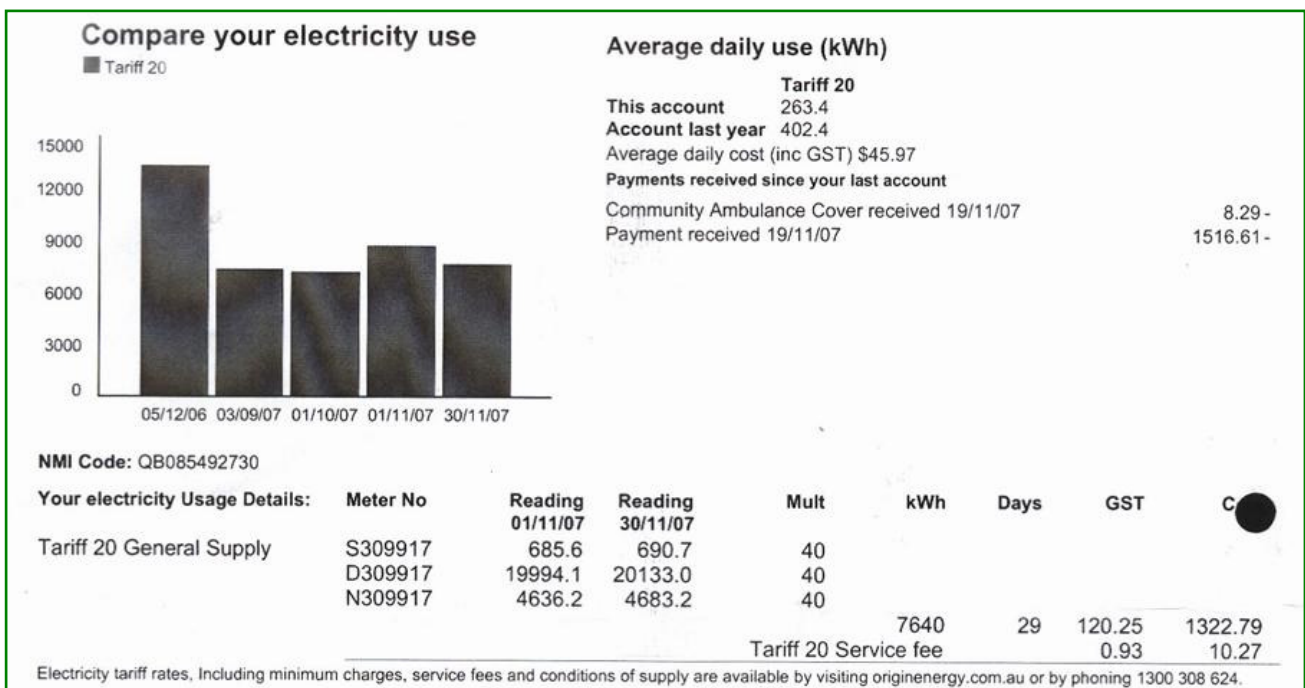
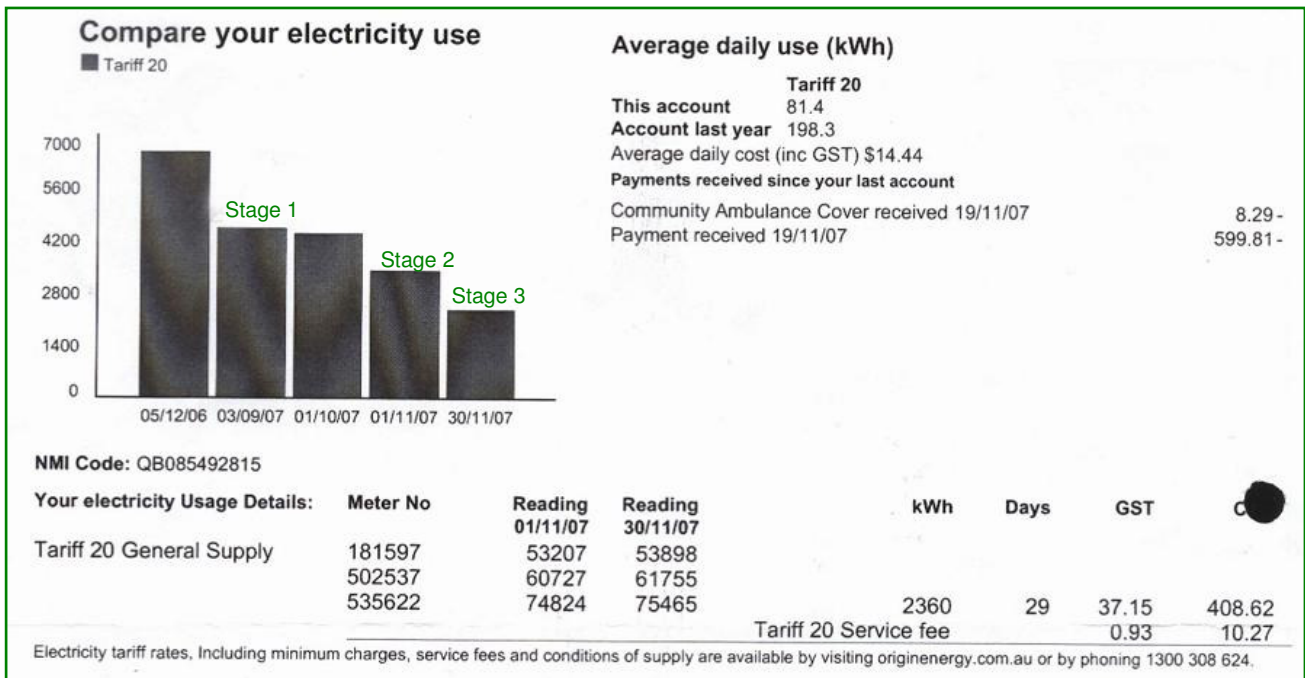


## ESL LIGHTING – CASE STUDY

The company has two warehouses with forty-eight 400W Metal Halide (MH) lights burning for 11 hours a day, 5 days a week, 50 weeks of the year. They also have one hundred double batten fluorescent fixtures in their two level office building at the front of the warehouses running for roughly equivalent timeframes. Replacement of all existing lighting products with ESL NextG Fluoro Range of lights was undertaken in a staged roll-out.

- **Stage 1** – Warehouse 1 & 2 complete replacement
- **Stage 2** – Level 1 of the office building
- **Stage 3** – Level 2 of the office building

Extracts from Origin Energy bills (dated 4 December 2007) \*



## ESL LIGHTING – CASE STUDY

### Comparative Savings Table

	Conventional Lighting	ESL NextG Fluoro Range
Average daily use (kWh)	600.7	344.83
Days in period	29	29
kWh for period	17420.3	10000
Cost per kWh (\$)	0.173141	0.173141
<b>Cost</b>	<b>\$3,016.17</b>	<b>\$1,731.41</b>
<b>Savings for period (29 days)</b>		<b>\$1,284.76</b>
<b>Savings per day</b>		<b>\$44.30</b>
<b>Estimated Savings per year</b>		<b>\$16,170.23</b> <b>(Overall saving of 42%)</b>

Figures for the Conventional Lighting solution were taken from the statement period 05/12/06 as shown on the Electricity Accounts (Account last year figures for Average daily use). As with any business, fluctuations are likely to occur in energy usage. Please note, though, that the savings are purely attributable to the changes in the lighting methods. Office and warehouse workflow was not modified in any way and general items (photocopiers, refrigerators, air-conditioning units, computers, etc) are used in the same manner now as before. Increases in energy usage at Stage 2 rollout can be attributed to the change of season from Spring to Summer 07 and the increased usage of air-conditioning systems until acclimatisation of office users to season occurred.

\* To view scans of the original Electricity Accounts for the period shown above please browse to our website, select the Information page and navigate to the Case Study section.

Please visit

[www.esllighting.com.au](http://www.esllighting.com.au)

or call us on

**1300 724 500**  
(National Landline)



**ESL Pty Ltd**

ABN 128 775 271  
Australian Division  
email: [corpsales@esllighting.com.au](mailto:corpsales@esllighting.com.au)